

XD6

Advanced Technology,
Smart Monitoring



Advanced Technology, Smart Monitoring



High Definition



Front & Rear Servicing



Wide Viewing Angle



Easy Service

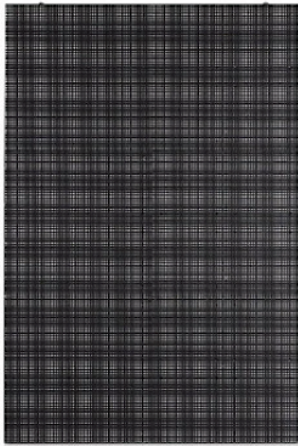


Low Noise



Excellent P Ratio

106mm



XD6 panel

170mm



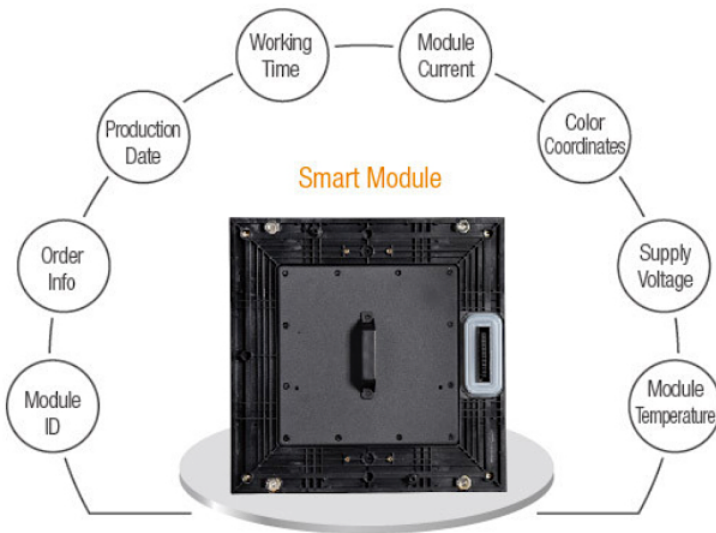
Normal P6 panel

Light, Thin,
Convenient

Panel thickness: 106mm. Saves installation space, Panel weight: 21kg. Easy delivery and installation.

Advanced Technology – Smart Monitoring

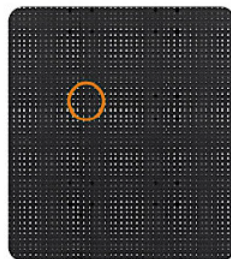
No need for monitoring cards! Can monitor the display's operation status.



Smart Module , Master Record

XD6 smart module display the ID number, order number, production date, working time, module current, color oordinates, module voltage and module temperature.

Front and Rear Servicing



Insert hexagon wrench into the hole



Loosen the screws



Disassemble the module



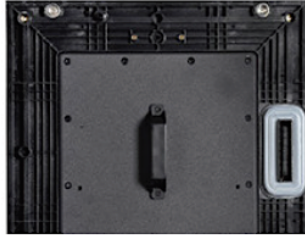
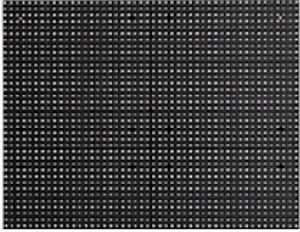
Loosen screws



Push the module



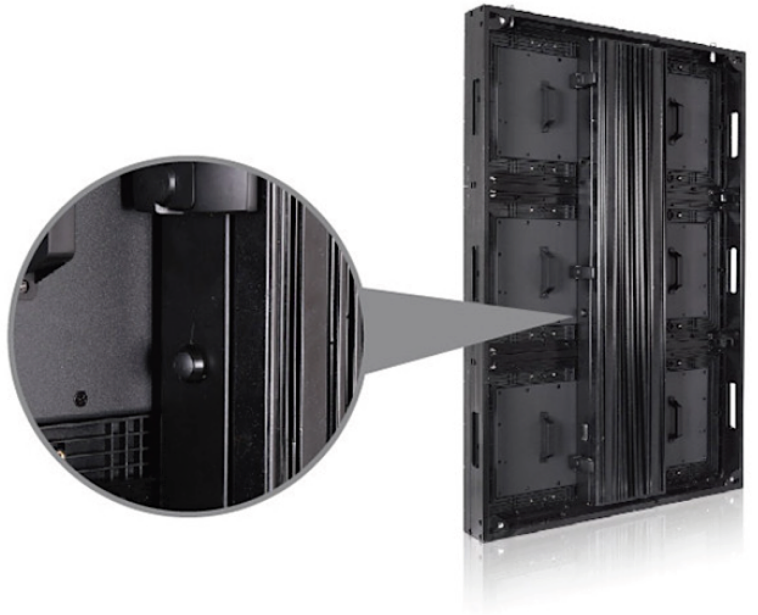
Disassemble the module



Waterproof Module

Fully enclosed structure with rubber gasket and waterproof module seals off the electronic components from

External Test Button



Parameter		Value
Physical Parameter	Pixel Configuration	SMD2727
	Pixel Pitch (mm)	6.66
	Pixel matrix per panel	96×144
	Module Dimensions (LxW)/ (mm)	320×320
	Panel Dimensions (LxWxH)/ (mm)	640×960×106
	Panel material	Aluminum
	Panel weight (kg)	21
Electronic Parameter	Color Grayscale (Bit)	16
	Gray Scale per Color (level)	65536
	Refresh Rate (Hz)	1920
	Driving Type	1/6
	Frame Frequency (Hz)	50/60
	Signal Transmission Distance (m)	CAT5 cable: < 100 m; Single mode fiber: < 10 km
Optical Parameter	Brightness (cd/m ²)	6000
	Color Temperature (K)	7500
	Color Contrast	5000:1
	Optimal Horizontal Viewing Angle (°)	140
	Optimal Vertical Viewing Angle (°)	120
Electrical Parameter	AC Input Voltage (V)	100~240
	AC Input Frequency (Hz)	50/60
	AC Input Power Maximum Value (W/m ²)	630
	AC Input Power Typical Value (W/m ²)	210
Circumstance Parameter	Storage Temperature (°C)	- 40~ + 60
	Operating Temperature (°C)	- 20~ + 50
	Storage Humidity (RH)	10% ~90%
	Operating Humidity (RH)	10% ~90%
	IP rating (Front/Rear)	IP65/IP54
	Lifetime Typical Value (hrs)	100000
Installation type	Cabinet installation type	Fixed
	Maximum number of panel for Lifting	/

107, rue de Javel
75015 Paris

Contact: Alexandre Verselle
Tél: +33 1 81 69 37 47

@: alexandre@luminescence-led.com
Web: www.luminescence-led.com