

X3 Fix

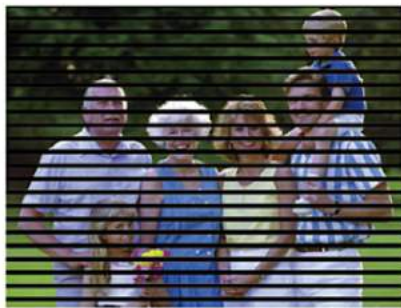
Ultra HD image



**Immersive Experience
with Ultra HD image**

Dot to dot display HD, FHD and 4K
video without video processor scaling

Extreme Simplicity with Wireless Design



Low refresh rate



X3 High refresh rate

Smooth display image

Smooth display image is realized shooting with 2000HZ refresh rate even under 1/2000 shutter professional camera shooting, fully meeting the demand of live feed switching.

Vivid Image with Low Brightness and High Grayscale

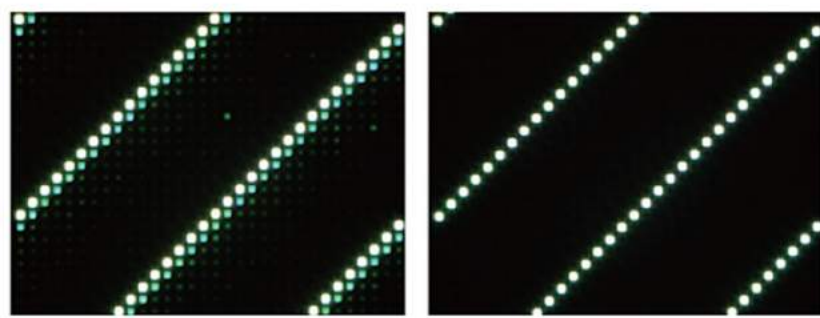
3000:1 contrast ratio acquired with high quality black face LED lamp and black mask, providing clearer and more vivid image



Normal display's grayscale



X3 grayscale



Clear Image Quality,
eliminating ghost line

Clear image quality is achieved after

Across Rental

Recalibration is not required in the event of module failure because new module can load data stored in receiving card or other modules with A3C. Different orders of the same model can be mixed if they are manufactured within 12-months-period, making cross rental possible.



Cross rental applicator,
different batches panels
in one screen

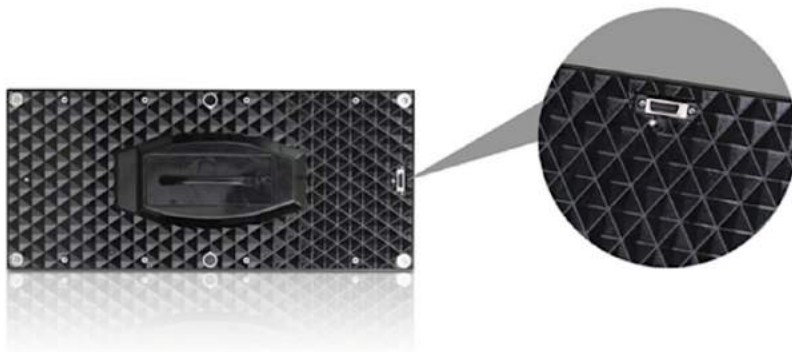
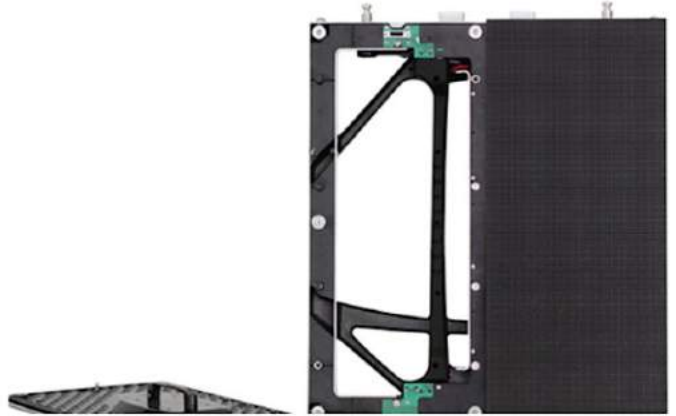


Replacement within 5s,
Saving Time and
Money

Magnetic design enables replacement
within 5s, 3 time faster than screw
design

Easy Installation Driven by Modular Design

Wiring, module and panel structure all integrated in modular design, making installation, dismantle and maintenance an easy job.

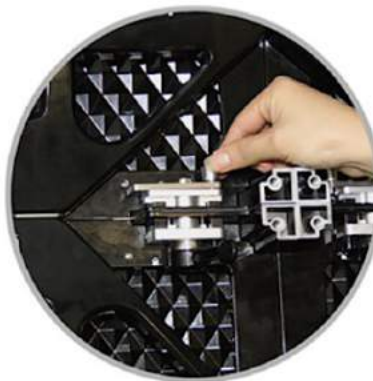


Intelligent Module

Intelligent module supported by integrated power supply, modular data processing and military level connector.

Multi-function Connector

Intelligent connector is integrated with connection and seam adjust ability





Seamless Connection

Patent connector is able to adjust seam making seamless connection and quick installation.

Wireless screen connection

Screen installed and connected without cables.



Pixel Pitch	3.125 mm
Pixels	SMD 3 in 1 (Black)
Cabinet Resolution	160 x 180 pixels
Module Size	250 x 562.5 mm
Cabinet Dimensions (W x H x D)	500 x 562.5 x 94 mm
Cabinet Weight	9.3 kg
Cabinet Weight per sq. m	30 kg
Cabinet Material	Aluminum
Brightness	1000 nits
Contrast Ratio	3000:1
Refresh Rate	≥2400 Hz
Pixel Density	102400 Pixels / sq.m
Viewing Angle(horizontal / vertical)	160/140 deg.
Ingress Protection(front / rear)	IP40
Power(maximum / average)	555/185 w/sq.m
Input voltage (AC)	110 ~ 240 V
Operating temperature :	-10 ~ +40 °C
Signal input format(with video processor):	AV, S-Video, VGA, DVI, YPbPr, HDMI, SDI, DP

Parameters

Luminescence

Led design technologies

Parameter		Value
Physical Parameter	Pixel Configuration	1515 black body 3in1 SMD
	Pixel Pitch (mm)	3.125
	Pixel matrix per panel	160×180
	Pixel density (pixels/sq.m.)	102400
	Module Dimensions (LxWxH)/ (mm)	250×562.5
	Cabinet Dimensions (LxWxH)/ (mm)	500×562.5×94
	Panel material	Aluminum-alloy
	Cabinet weight (kg/panel)	9.3
Electronic Parameter	Color Grayscale (Bit)	14
	Gray Scale per Color (level)	16384
	Refresh Rate (Hz)	2400
	Driving Type	1/15
	Frame Frequency (Hz)	50/60
	Signal Transmission Distance (m)	CAT5 cable:<100 m; Single mode fiber:<10 km
Optical Parameter	Brightness (nit)	1000
	Optimal Horizontal Viewing Angle (°)	160
	Optimal Vertical Viewing Angle (°)	140
Electrical Parameter	AC Input Voltage (V)	100~240
	AC Input Frequency (Hz)	50/60
	AC Input Power Maximum Value (W/sq.m)	555
	AC Input Power Typical Value (W/sq.m)	185
Circumstance Parameter	Storage Temperature (°C)	-20~+50
	Operating Temperature (°C)	-10~+40
	Storage Humidity (RH)	10%~90%
	Operating Humidity (RH)	10%~90%
	IP rating (Front/Rear)	IP40
	Lifetime Typical Value (hrs)	100000
Installation type for rental product	Cabinet installation type	rental\fix
	Maximum number of panel for Lifting	16

107, rue de Javel
75015 Paris

Contact: Alexandre Verselle
Tél: +33 1 81 69 37 47

@: alexandre@luminescence-led.com
Web: www.luminescence-led.com

X10

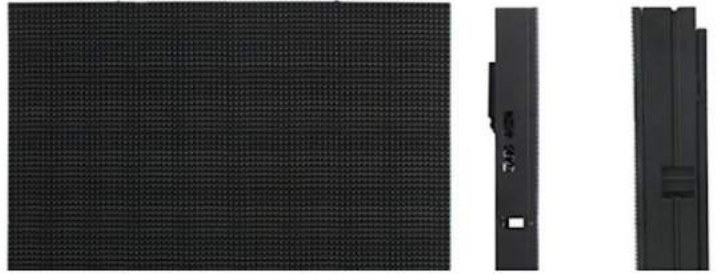
Super Energy Saving



Ultra low power consumption, the first option for saving energy

8,000 nits brightness with 330W/sqm power consumption, 50% less than the traditional panels. Excellent display performance, the first option for millions of advertising operators.

Design conciseness
with low operation
cost



Temperature

Humidity

Voltage

Module Voltage

Cables loosen



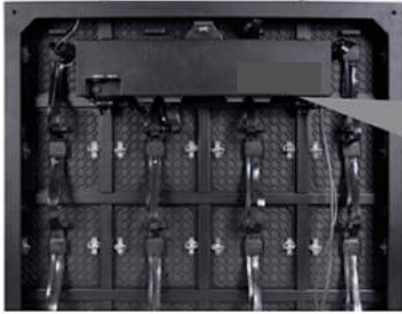
Intelligent panel
design, real time
feedback

Real time monitoring temperature,
humidity, module voltage, cables
loosen, & etc. without cable and card,
improving the speed of service

Innovative Module

Waterproof module with enclosed
structure.





Easy control

Exterior test button displays data and power working signal, easy to check

High integration design, convenient and safe

Power box integration design, waterproof flight connector, easy installation and maintenance.



Insert tool into the maintenance hole



Horizontal pull module



Disassemble cables, and take the module directly.

Front service available

Insertion front service, finish taking place one module within 30 seconds, 3 times up to the efficiency.

Rear service

Special rear lock design, fast module maintenance with in 30 seconds.



Disassemble cables first



Manual unlock the module



Take the module from rear directly



Power supply front and rear service available

Convenient fast maintenance, saving your time cost.

Parameter		Value
Physical Parameter	Pixel Configuration	1R1G1B
	Pixel Pitch (mm)	10.66
	Pixel matrix per panel	120×120
	Module Dimensions (LxW)/(mm)	320×320
	Panel Dimensions (LxWxH)/(mm)	1280×1280×150
	Panel material	Steel
	Panel weight (kg)	62
Electronic Parameter	Color Grayscale (Bit)	16
	Gray Scale per Color (level)	65536
	Refresh Rate (Hz)	1920
	Driving Type	1/5
	Frame Frequency (Hz)	50/60
	Signal Transmission Distance (m)	CAT5 cable: < 100 m; Single mode fiber: < 10 km
Optical Parameter	Brightness (cd/m ²)	8000
	Color Temperature (K)	7500
	Color Contrast	5500:1
	Optimal Horizontal Viewing Angle (°)	120
	Optimal Vertical Viewing Angle (°)	60
Electrical Parameter	AC Input Voltage (V)	100~240
	AC Input Frequency (Hz)	50/60
	AC Input Power Maximum Value (W/m ²)	330
	AC Input Power Typical Value (W/m ²)	110
Circumstance Parameter	Storage Temperature (°C)	- 40~ + 60
	Operating Temperature (°C)	- 20~ + 50
	Storage Humidity (RH)	10% ~90%
	Operating Humidity (RH)	10% ~90%
	IP rating (Front/Rear)	IP65/IP54
	Lifetime Typical Value (hrs)	100000
Installation type	Cabinet installation type	Fixed
	Maximum number of panel for Lifting	/

107, rue de Javel
75015 Paris

Contact: Alexandre Verselle
Tél: +33 1 81 69 37 47

@: alexandre@luminescence-led.com
Web: www.luminescence-led.com

X16

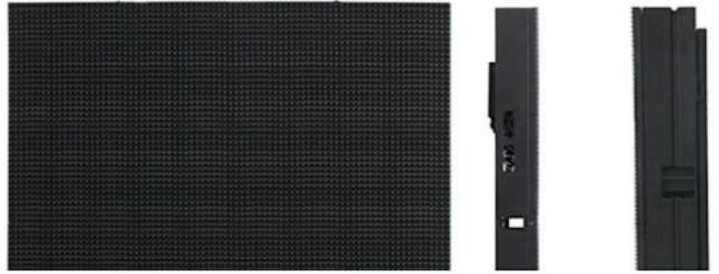
A New era of 10,000 nit



First option for
advertising operators

10,000 nits brightness with 400W/sqm
power consumption, 50% less than the
traditional panels.

Design conciseness
with low operation
cost



Temperature

Humidity

Voltage

Module Voltage

Cables loosen



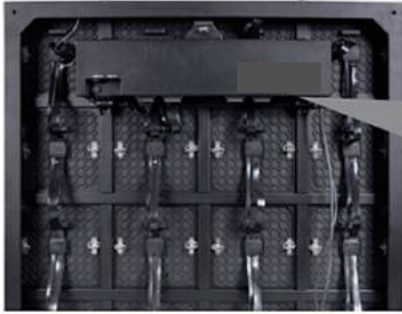
Intelligent panel
design, real time
feedback

Real time monitoring temperature,
humidity, module voltage, cables
loosen, & etc. without cable and card,
improving the speed of service

Innovative Module

Waterproof module with enclosed
structure.





Easy control

Exterior test button displays data and power working signal, easy to check

High integration design, convenient and safe

Power box integration design, waterproof flight connector, easy installation and maintenance.



Insert tool into the maintenance hole



Horizontal pull module



Disassemble cables, and take the module directly.

Front service available

Insertion front service, finish taking place one module within 30 seconds, 3 times up to the efficiency.

Rear service

Special rear lock design, fast module maintenance with in 30 seconds.



Disassemble cables first



Manual unlock the module



Take the module from rear directly



Power supply front and rear service available

Convenient fast maintenance, saving your time cost.

Parameter		Value
Physical Parameter	Pixel Configuration	1R1G1B
	Pixel Pitch (mm)	10.66
	Pixel matrix per panel	120×120
	Module Dimensions (LxW)/(mm)	320×320
	Panel Dimensions (LxWxH)/(mm)	1280×1280×150
	Panel material	Steel
	Panel weight (kg)	62
Electronic Parameter	Color Grayscale (Bit)	16
	Gray Scale per Color (level)	65536
	Refresh Rate (Hz)	1920
	Driving Type	1/5
	Frame Frequency (Hz)	50/60
	Signal Transmission Distance (m)	CAT5 cable: < 100 m; Single mode fiber: < 10 km
Optical Parameter	Brightness (cd/m ²)	8000
	Color Temperature (K)	7500
	Color Contrast	5500:1
	Optimal Horizontal Viewing Angle (°)	120
	Optimal Vertical Viewing Angle (°)	60
Electrical Parameter	AC Input Voltage (V)	100~240
	AC Input Frequency (Hz)	50/60
	AC Input Power Maximum Value (W/m ²)	330
	AC Input Power Typical Value (W/m ²)	110
Circumstance Parameter	Storage Temperature (°C)	- 40~ + 60
	Operating Temperature (°C)	- 20~ + 50
	Storage Humidity (RH)	10% ~90%
	Operating Humidity (RH)	10% ~90%
	IP rating (Front/Rear)	IP65/IP54
	Lifetime Typical Value (hrs)	100000
Installation type	Cabinet installation type	Fixed
	Maximum number of panel for Lifting	/

107, rue de Javel
75015 Paris

Contact: Alexandre Verselle
Tél: +33 1 81 69 37 47

@: alexandre@luminescence-led.com
Web: www.luminescence-led.com

XD6

Advanced Technology,
Smart Monitoring



Advanced Technology, Smart Monitoring



High Behavior



Front & Rear Swiveling



Wide Viewing Angles



Easy Service



Low Noise



Excellent IP Rate

106mm



XD6 panel

170mm



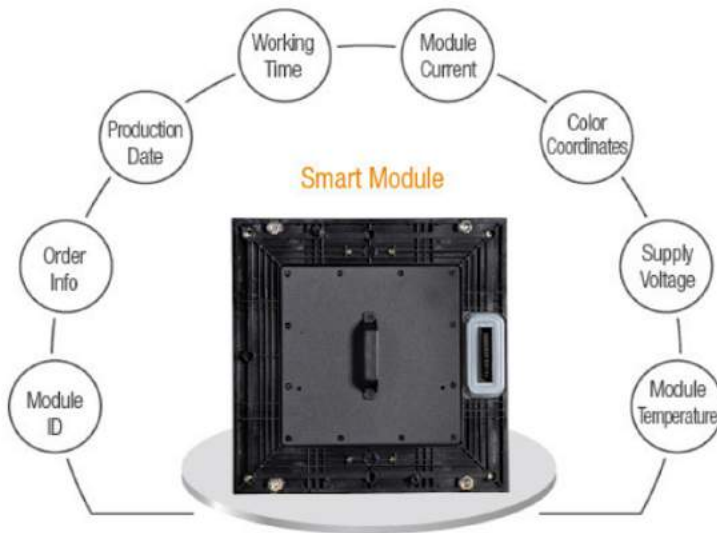
Normal P6 panel

Light, Thin,
Convenient

Panel thickness: 106mm. Saves installation space, Panel weight: 21kg. Easy delivery and installation.

Advanced Technology – Smart Monitoring

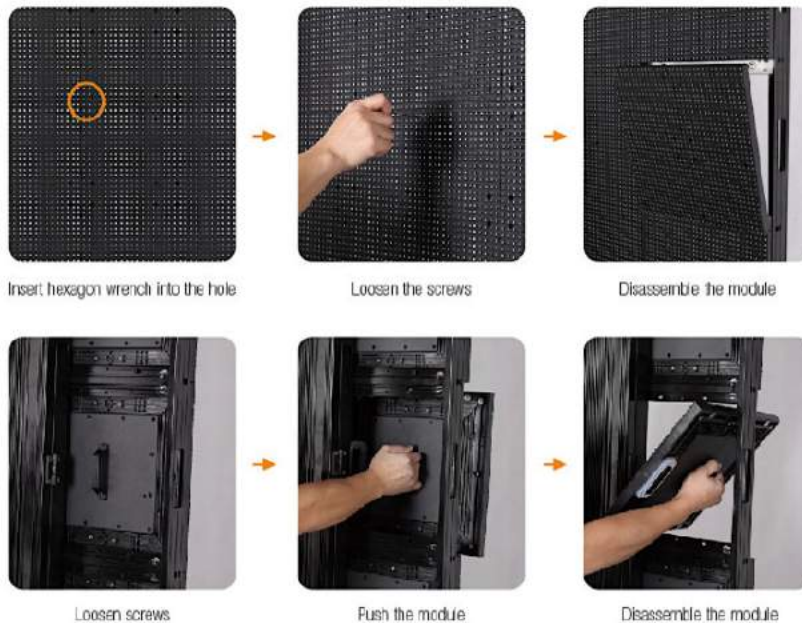
No need for monitoring cards! Can monitor the display's operation status.



Smart Module , Master Record

XD6 smart module display the ID number, order number, production date, working time, module current, color oordinates, module voltage and module temperature.

Front and Rear Servicing

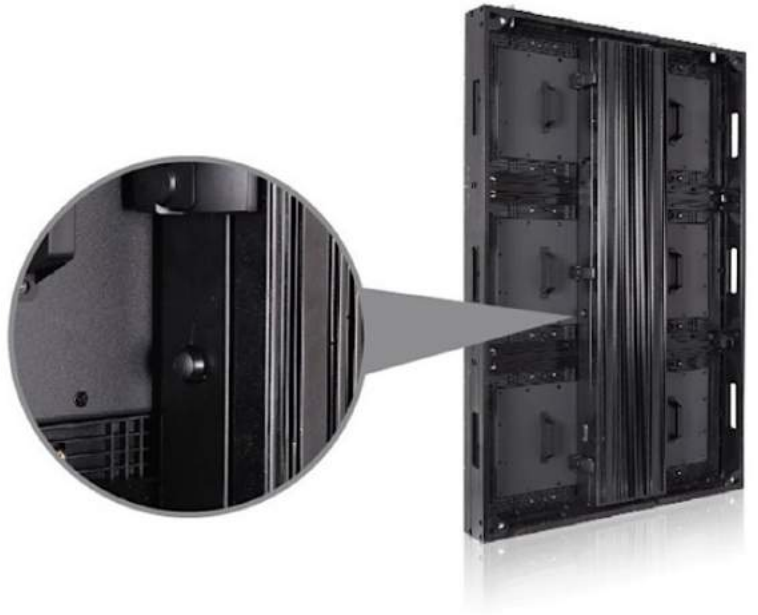




Waterproof Module

Fully enclosed structure with rubber gasket and waterproof module seals off the electronic components from

External Test Button



Parameter		Value
Physical Parameter	Pixel Configuration	SMD2727
	Pixel Pitch (mm)	6.66
	Pixel matrix per panel	96×144
	Module Dimensions (LxW)/ (mm)	320×320
	Panel Dimensions (LxWxH)/ (mm)	640×960×106
	Panel material	Aluminum
	Panel weight (kg)	21
Electronic Parameter	Color Grayscale (Bit)	16
	Gray Scale per Color (level)	65536
	Refresh Rate (Hz)	1920
	Driving Type	1/6
	Frame Frequency (Hz)	50/60
	Signal Transmission Distance (m)	CAT5 cable: < 100 m; Single mode fiber: < 10 km
Optical Parameter	Brightness (cd/m ²)	6000
	Color Temperature (K)	7500
	Color Contrast	5000:1
	Optimal Horizontal Viewing Angle (°)	140
	Optimal Vertical Viewing Angle (°)	120
Electrical Parameter	AC Input Voltage (V)	100~240
	AC Input Frequency (Hz)	50/60
	AC Input Power Maximum Value (W/m ²)	630
	AC Input Power Typical Value (W/m ²)	210
Circumstance Parameter	Storage Temperature (°C)	- 40~ + 60
	Operating Temperature (°C)	- 20~ + 50
	Storage Humidity (RH)	10% ~90%
	Operating Humidity (RH)	10% ~90%
	IP rating (Front/Rear)	IP65/IP54
	Lifetime Typical Value (hrs)	100000
Installation type	Cabinet installation type	Fixed
	Maximum number of panel for Lifting	/

107, rue de Javel
75015 Paris

Contact: Alexandre Verselle
Tél: +33 1 81 69 37 47

@: alexandre@luminescence-led.com
Web: www.luminescence-led.com

XD10

Advanced Technology,
Smart Monitoring



Advanced Technology, Smart Monitoring



High Refresh



Front & Rear
Viewing



Wide Viewing
Angle



Easy Service



Low Noise



TRP
45-54
Quietest
P-Rate

106mm



XD10 panel

170mm



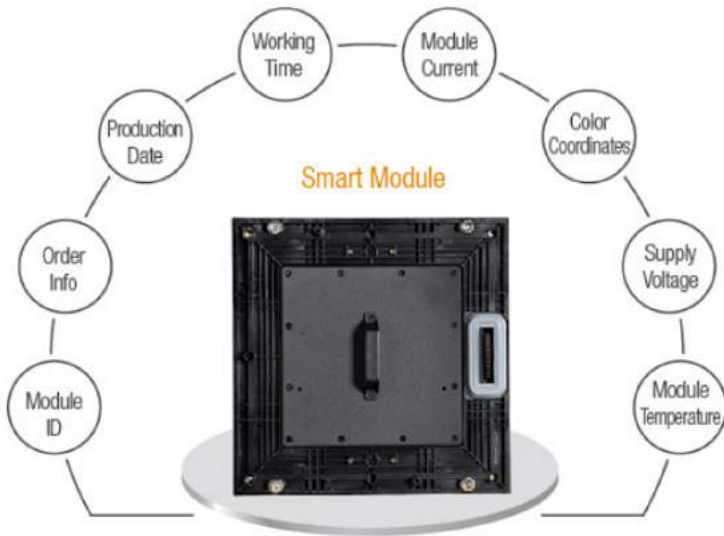
Normal P6 panel

Light, Thin,
Convenient

Panel thickness: 106mm. Saves
installation space, Panel weight: 21kg.
Easy delivery and installation.

Advanced Technology - Smart Monitoring

No need for monitoring cards! Can monitor the display's operation status.



Smart Module , Master Record

XD10 smart module display the ID number, order number, production date, working time, module current, color oordinates, module voltage and module temperature.

Front and Rear Servicing



Insert hexagon wrench into the hole



Loosen the screws



Disassemble the module



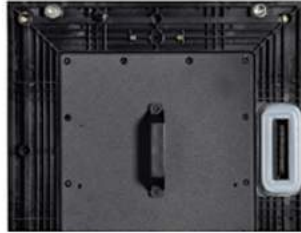
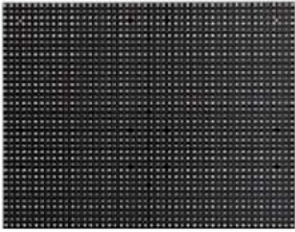
Loosen screws



Push the module



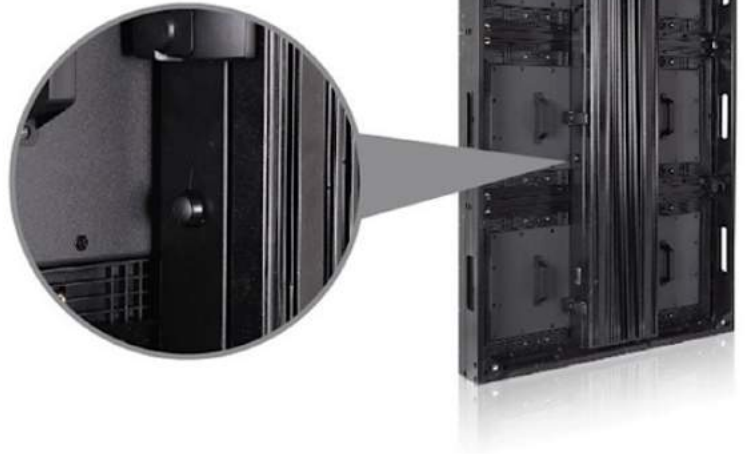
Disassemble the module



Waterproof Module

Fully enclosed structure with rubber gasket and waterproof module seals off the electronic components from

External Test Button



Parameter		Value
Physical Parameter	Pixel Configuration	SMD2727
	Pixel Pitch (mm)	10
	Pixel matrix per panel	64×96
	Module Dimensions (LxW)/(mm)	320×320
	Panel Dimensions (LxWxH)/(mm)	640×960×106
	Panel material	Aluminum
	Panel weight (kg)	21
Electronic Parameter	Color Grayscale (Bit)	16
	Gray Scale per Color (level)	65536
	Refresh Rate (Hz)	3840
	Driving Type	1/2
	Frame Frequency (Hz)	50/60
	Signal Transmission Distance (m)	CAT5 cable: < 100 m; Single mode fiber: < 10 km
Optical Parameter	Brightness (cd/m ²)	6000
	Color Temperature (K)	7500
	Color Contrast	6500:1
	Optimal Horizontal Viewing Angle (°)	140
	Optimal Vertical Viewing Angle (°)	120
Electrical Parameter	AC Input Voltage (V)	100~240
	AC Input Frequency (Hz)	50/60
	AC Input Power Maximum Value (W/m ²)	660
	AC Input Power Typical Value (W/m ²)	220
Circumstance Parameter	Storage Temperature (°C)	- 40~ + 60
	Operating Temperature (°C)	- 20~ + 50
	Storage Humidity (RH)	10%~90%
	Operating Humidity (RH)	10%~90%
	IP rating (Front/Rear)	IP65/IP54
	Lifetime Typical Value (hrs)	100000
Installation type	Cabinet installation type	Fixed
	Maximum number of panel for Lifting	/

107, rue de Javel
75015 Paris

Contact: Alexandre Verselle
Tél: +33 1 81 69 37 47

@: alexandre@luminescence-led.com
Web: www.luminescence-led.com