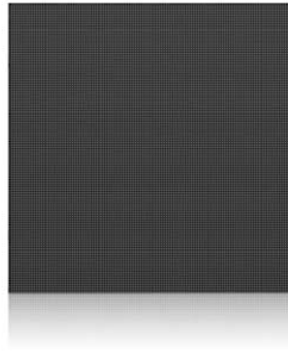


A3 Pro

High Definition
LED Display



Professional calibration technology A2C

- Absen 2nd Generation Calibration Technology.
- Perfectly matching panels produced within 12 months.

Professional image representation

- High refresh allows for flawless shooting by professional camera.
- High grayscale delivers full image details even in low brightness condition.



High refresh rate



High-definition



Easy maintenance



Fast installation



User-friendly



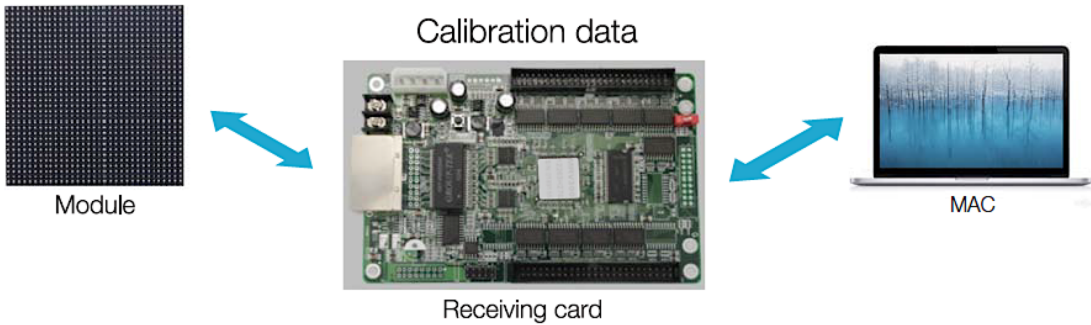
Light weight



Noise-free

Replace modules, unnecessary to easy calibration

Once calibration, all the relative data will be loaded into the receiving cards and modules, replace modules or receiving cards, unnecessary to re-calibrate, saving your labor and time cost.



Seamless mosaic with adjustable brightness and color temperature

The panel cabinets are precision manufactured using CNC machines, and the special high-quality panel connectors create a seamless image mosaic. The displays have an intelligent control system for intelligent adaptive brightness and color temperature control based on the ambient lighting, which creates a high-quality display effect.

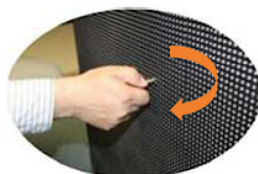


Thin & light weight panels quick maintenance

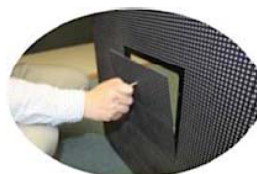
Each Panel has been carefully crafted and only weighs **10kg**. Front-side maintenance, improved power module design and superior connectors ensure that maintenance efficiency is tripled.



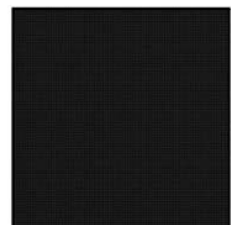
Insert the tool



Clockwise



Pull

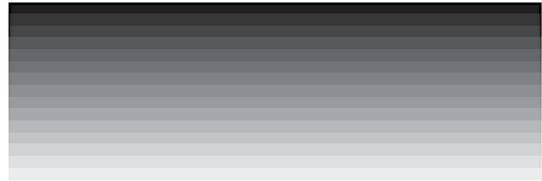


Automatic matched by the magnet design.

High grayscale in low brightness condition



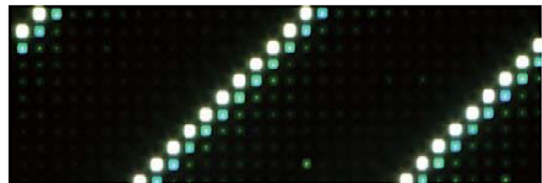
A3Pro



Dynamic content delivered without ghost line or tailing



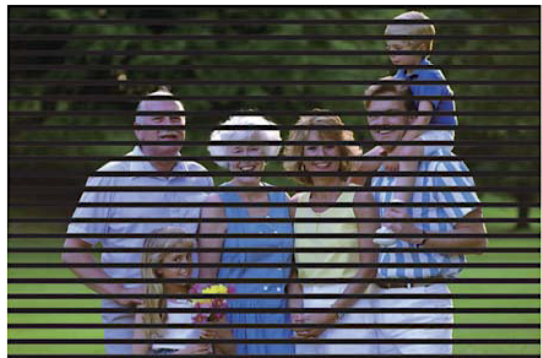
A3Pro



Up to 2000Hz refresh rate



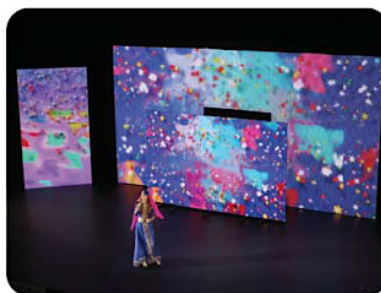
Refresh rate \geq 2000Hz



Refresh rate $<$ 2000Hz

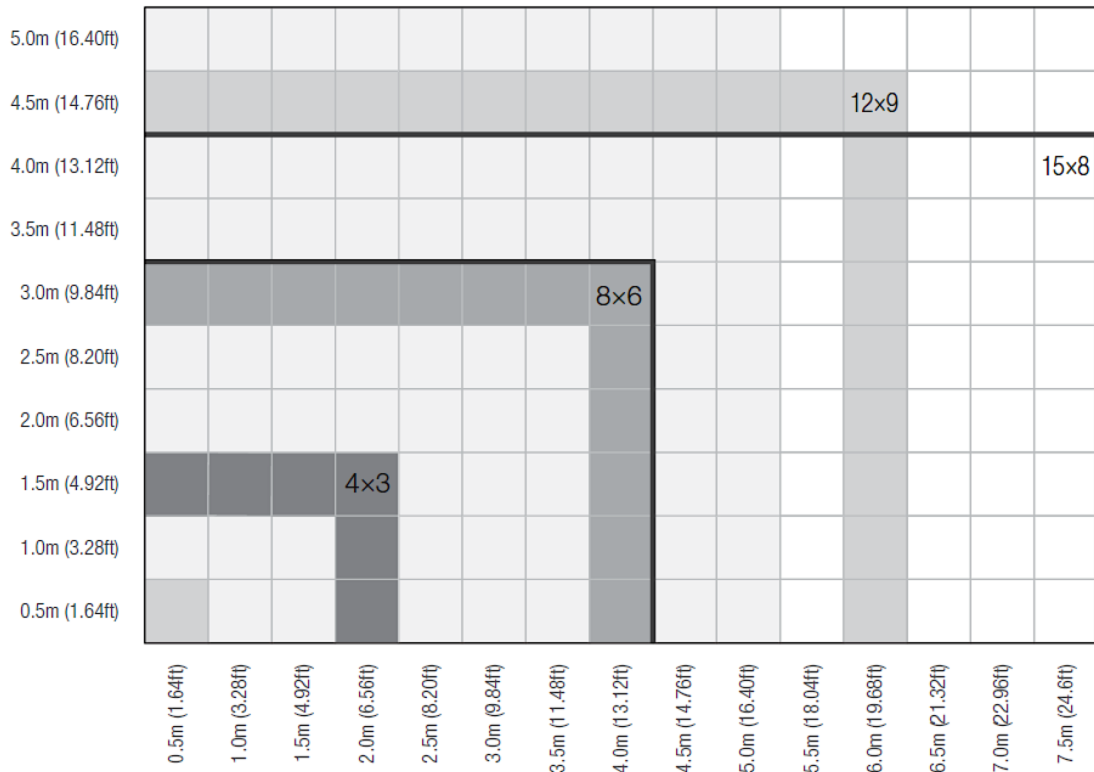
Applications:

Indoor stages, exhibitions and where need HD indoor displays. TV stations, concerts, theme parks, exhibitions and so on where needing HD displays install and dismantle easily.



Luminescence

Led design technologies



Specifications

Pixel pitch	3,9 mm
Pixel configuration	SMD 3 in 1
Brightness	≥1200 nits
Refresh rate	≥2000 Hz
Gray scale	65536 level
Colors	281 Trillion
Ingress protection (Front / Rear)	IP40/IP21
Viewing angle (H/V)	140/140 deg.

Power consumption (max/avg)	540/180 w/sq.m.
Panel size (WxHxD)	500x500x96 mm
Panel weight	10 kg
Panel material	Aluminum
Pixel matrix per panel	128x128 pixels
Input voltage (AC)	110 ~ 240 V
Operating temperature	-10 ~ +40°C
Signal input format (with video processor)	AV, S-Video, VGA, DVI, HDMI, SDI, DP

A3pro	Panel	Ratio	Panel QTY.	Size (m ²)	Dimension (WxH)m	Pixel resolution	Total weight (kg)	Power (Max. Watts)
4:3	4x3	4:3	12	3	2x1.5	512x384	120	1620
	8x6	4:3	48	12	4x3	1024x768	480	6480
	12x9	4:3	108	27	6x4.5	1536x1152	1080	14580
	16x12	4:3	192	48	8x6	2048x1536	1920	25920
16:9	5x3	16:9.6	15	3.75	2.5x1.5	640x384	150	2025
	7x4	16:9.1	28	7	3.5x2	896x512	280	3780
	9x5	16:8.9	45	11.25	4.5x2.5	1152x640	450	6075
	10x6	16:9.6	60	15	5x3	1280x768	600	8100
	12x7	16:9.3	84	21	6x3.5	1536x896	840	11340
	14x8	16:9.1	112	28	7x4	1792x1024	1120	15120
	15x8	16:8.5	120	30	7.5x4	1920x1024	1200	16200
	16x9	16:9	144	36	8x4.5	2048x1152	1440	19440

107, rue de Javel
75015 Paris

Contact: Alexandre Verselle
Tél: +33 1 81 69 37 47

@: alexandre@luminescence-led.com
Web: www.luminescence-led.com